



Ambrosia Bag

This complimentary bag design features fabrics in the "Ambrosia" collection by Amanda Murphy for Robert Kaufman Fabrics. It is a great way to practice your free-motion quilting!



© 2010 Amanda Murphy

AMANDA *AM* MURPHY





© 2010 Amanda Murphy. This complimentary pattern is for personal use only. Please feel free to share it with your friends, but the sale of this pattern or bags made from it is not permitted. Thanks!

Fabric

fabric	yardage	location	Summer colors (pictured on cover)	Spring colors (swatches pictured above)	cut to...
A	1/2 yd.	main panels	AAM-10757-193	AAM-10757-192	2 (18" x 12-1/2") rectangles
B	5/8 yd.	bag lining	AAM-10756-193	AAM-10756-192	do not cut
C	1/2 yd.	bag bottom and shoulder straps	AAM-10758-193	AAM-10758-193	1 (6" x 18") rectangle 2 (3") strips
D	3/8 yd.	contrast straps and insides of pleats	AAM-10758-192	AAM-10758-192	2 (3") strips 4 (3" x 8") rectangles
E	1/4 yd. or 1 fat quarter	pocket	AAM-10759-136	AAM-10759-136	6 (3" x 8") rectangles
F	1 fat quarter	pocket trim	AAM-10760-193	AAM-10760-192	2 (9") squares

Additional Materials

- 21" x 33" quilt batting and 2 (1" x 35") strips of batting
- 21" x 33" muslin
- 4 D-rings
- walking foot





Instructions

Use a 1/4" seam allowance unless otherwise noted.

1. Sew one of the main panel pieces onto each of the long sides of the bottom panel of the bag. (Make sure that the fabrics are oriented correctly if they are directional.) Press seams open.
2. Spread out your muslin. Lay your batting on top. Lay your pieced main panel section right side up on top of your batting. Pin.
3. Stitch in the ditch on top of both seams. Free motion quilt the entire panel as desired. (No one will see the backside of the muslin lining so be daring and try a technique you might not have used before!) Trim batting and muslin flush with main panel. Set aside.
4. To make the pockets, sew the long edges of the (3" x 8") rectangles together to form a set of 5 rectangles, alternating the main pocket panels with the inner pleat panels, as shown in **Diagram A**. Press seams toward the main pocket fabric. Fold along the edges of the seams to form pleats, so that only about 1/2" of the inner pleat fabric shows as shown in **Diagram B**. Press. Baste slightly less than 1/4" from the edges to hold pleats in place. Sew a pocket trim piece to one of the basted edges. Press seam toward trim. Take entire unit and fold in half, so that a narrow piece of the trim shows on the outside of the pocket. (**Diagram C**) Press. Baste around the raw edges of the pocket, 1/8" from the edge. Repeat for other pocket.
5. Spread panel out right side up and place pocket right side down on top as shown in **Diagram D** on the next page. The pocket should be centered horizontally on the main panel (mine were 4-1/4" from the edges of the panel but yours might be different depending on the amount of quilting used) and the bottom of the pocket should overlap one of the panel seams by 1/2". Pin. Turn panel over so the muslin is facing up and stitch over the seam line so that it catches the bottom of the pocket. Turn the entire unit right side up and press the pocket up in place. Baste the sides of the pocket about 1/8" from the pocket edge. Repeat to attach other pocket.

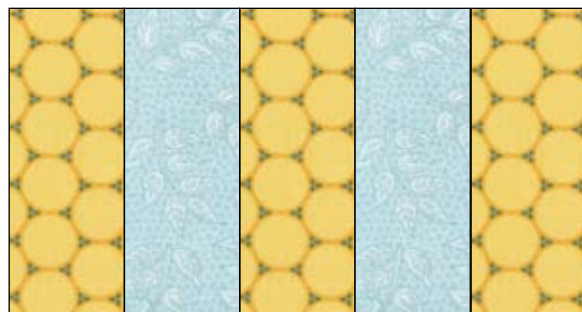


Diagram A

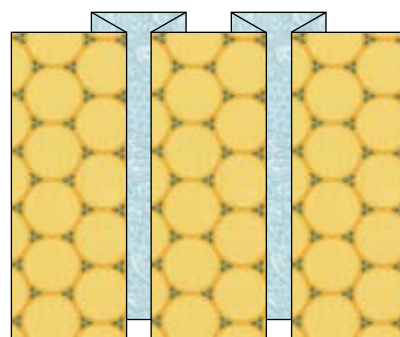


Diagram B

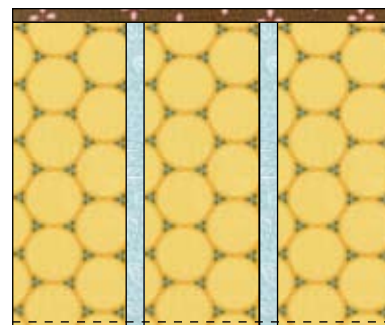


Diagram C



6. Turn in the long edges the shoulder straps and contrasting straps 1/2". Press. Fold again lengthwise, so the original folded edges meet. Press. Set shoulder straps aside.
7. Run a chalk line 1" from the short edges of your main panel.
8. Pin the contrasting straps onto your main panel, allowing them to hang off the edges as pictured in **Diagram E**. They should run parallel to the long edges of the main panel and overlap the raw edges of the pockets. To reduce bulk in the pocket area, it is helpful to keep the edges with double folds facing toward the outside of the bag. Trim the straps so that they overlap the edge of the main panel by about 1/2". Starting from the center of the panel, topstitch the straps down, about 1/8" from their edges. **STOP STITCHING ABOUT 3" FROM THE MAIN PANEL'S EDGE** so the ends of your strap hang free!
9. Thread a D-ring onto the free edge of each strap, wrapping the extra fabric around to the back of the strap. The base of the D-ring should sit on the 1" chalk line you drew in Step 7. Pin,.
10. Continue the stitching line that you completed in Step 8 around the edge of the strap as shown in **Diagram F** on the next page, catching the end of the strap underneath in the process. Backstitch a few times on the horizontal seam near the D-ring to secure.
11. Trim your lining piece to the size of your main panel. Place it beside the main panel and transfer the seam lines where the bottom panel meets the side panels onto the back of your lining fabric.

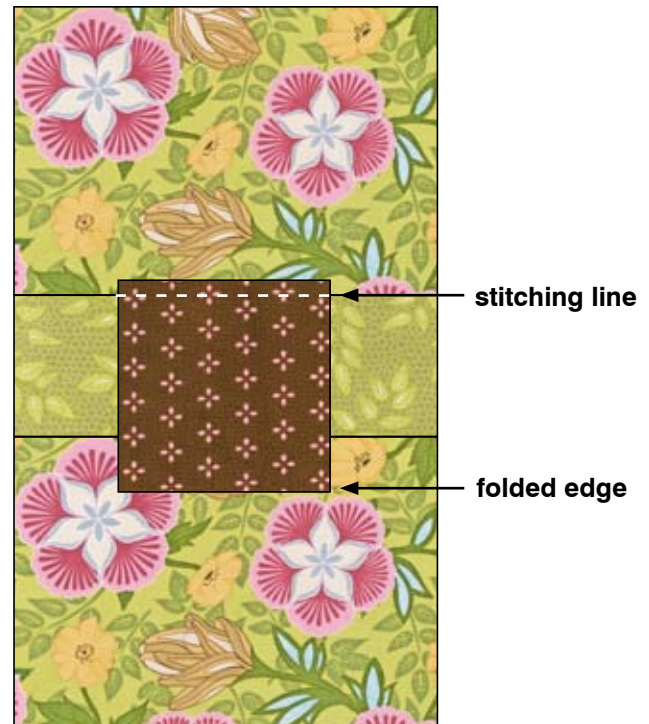


Diagram D

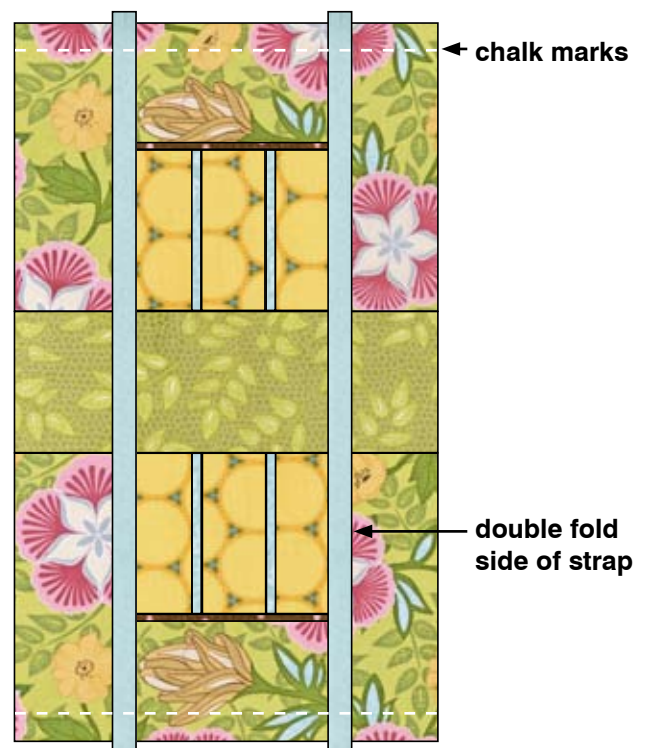
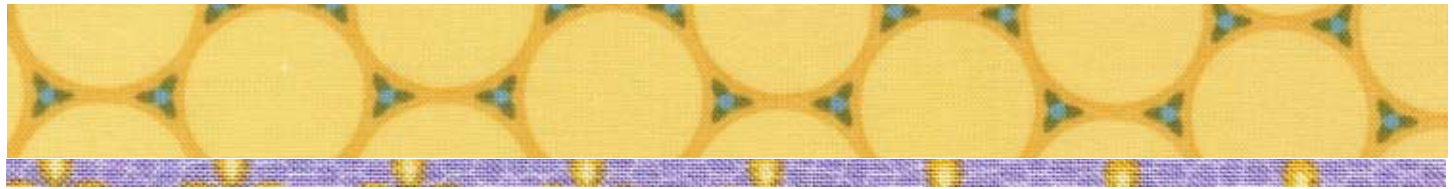


Diagram E



12. Fold main quilted panel in half and pin. Make sure that the main seams (where the bottom panel joins the side panels) are aligned. Stitch. Press seams open. To form gussets, grab a corner of your bag and crush your side and bottom seams together to form a triangle, with the corner of the bag at its point, as shown in **Diagram G**. Stitch right across stitching line - the "base" of your triangle - from the "stitching in the ditch" line that you sewed in Step 3. Turn right side out to check your results. Once you are sure you are satisfied turn wrong side out and stitch one more time to reinforce the seam.
13. Repeat Step 12 with the lining.
14. Turn quilted piece right side out. Press corners. Turn lining wrong side out. Place quilted piece inside lining and pin all the way around the top, keeping D-rings out of the way. Leaving a 5" gap for turning, stitch around the top with a 3/8" seam.
15. Turn bag right side out and slipstitch opening closed. Press top edge of bag. Topstitch 1/4" from the edge.
16. Trim (1") batting strips to desired shoulder strap length. Trim shoulder straps to that length + 2" extra for attaching to D-Ring. Insert batting into fold of strap fabric. Thread end of strap through D-Ring. Turn under raw edge and pin. Continue pinning the rest of the strap closed until you get near the end. Thread strap through D-ring on the same side of the bag, making sure not to twist the strap. Turn under raw edge and pin. Topstitch 1/8" from the edge around the perimeter of the strap. Add extra reinforcement to stitches that secure the D-rings. Repeat for remaining strap.
17. Enjoy your lovely bag!

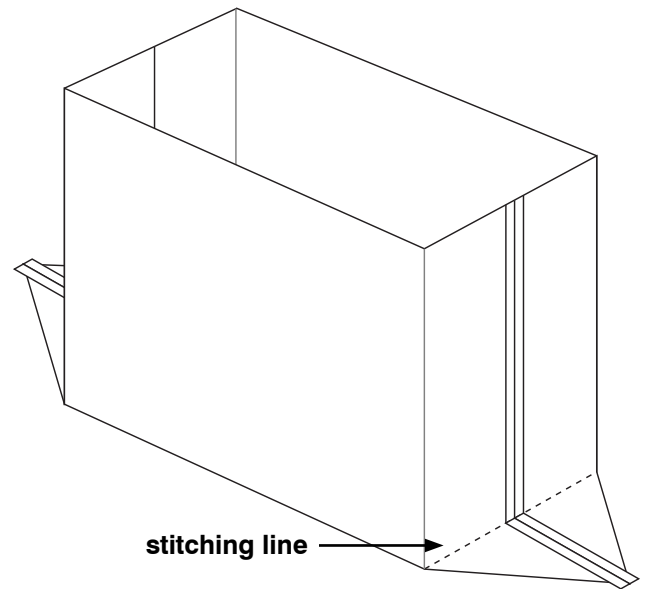


Diagram F

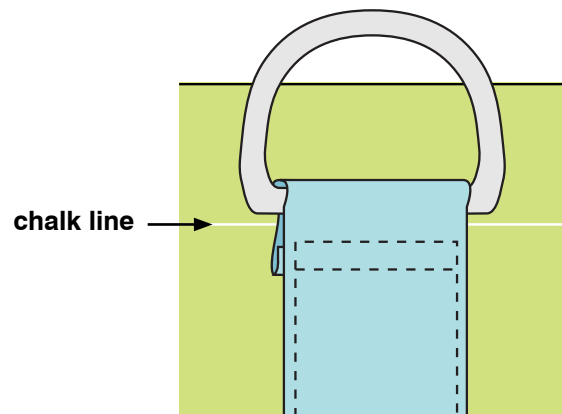


Diagram G